



Seed Treatments & Herbicide Control For In-Season Crop Management

Tyler DiGiacomo, Matthew Winkler,
Blake Bouchey & David Crain

Session Topics



Corn Overtreating
Soybean Seed Treatment

Corn Trait Highlight
Spring Herbicides
Bare Ground Spray Plot

Ulti Graze
Wheat Fungicide

See & Spray Technology
VRT Planting
Solix Robot Update

Ascend SL

Ultra Che Zinc

80/20 Talc Graphite

Seed Plus Graphite

Dash PBC

Corn Overtreating



Ascend SL + Ultra Che Zinc 9%



Ascend SL: Plant Growth Regulator

- 0.090% Cytokinin
 - Promotes cell division and leaf expansion.
- 0.030% Gibberellic acid
 - Stimulates cell division and elongation in leaves and stems.
- 0.045% Indolebutyric Acid
 - Stimulates root formation and development and increases cell elongation.

Ultra Che Zinc 9%: Seed Nutrition

- Contains Nitrogen & Zinc
- Reduces nutrient tie up
- Increases nutrient efficiency
- Improves metabolic function of plants
- Essential for growth hormone production
- Zinc affects chlorophyll synthesis

Ascend SL Yield Results



Benefits of Ascend® PGR on Corn

	Sites (% positive response)	Number of Locations	Yield Response (bu/A)
3-Year Average	60.5	199	5.85

Germination



Full Maturity



Dash PBC



Dash™ PBC

Bio+ Hopper Box Seed Lubricant

1% NON-PLANT FOOD INGREDIENTS

Concentrations listed below are in dry form

Product will contain a minimum of 300b colony forming units (CFU's) per acre applied at recommended rate.

SOIL AMENDMENT (ACTIVE) INGREDIENTS

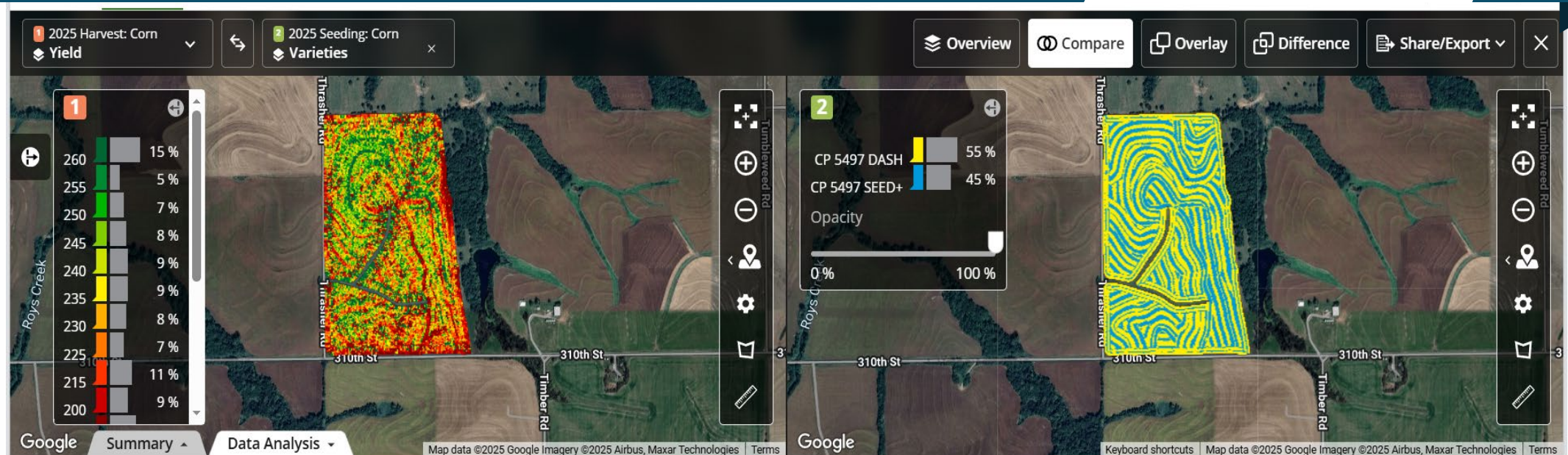
Bacillus licheniformis	6.8 x 10 ⁹ cfu/g
Bacillus composti	6.8 x 10 ⁹ cfu/g
Bacillus azotofixans	6.8 x 10 ⁹ cfu/g
Bacillus ligniniphilus	6.8 x 10 ⁹ cfu/g
Thiobacillus sulfooxidans	6.8 x 10 ⁹ cfu/g
Thiobacillus ferrooxidans	6.8 x 10 ⁹ cfu/g
Azotobacter chroococcum	6.8 x 10 ⁹ cfu/g
Bradyrhizobium denitrificans	6.8 x 10 ⁹ cfu/g

Other Ingredients

Soy Protein Isolates	99%
Glutamic Acid*	12.70%
Arginine*	4.75%

*Amino Acids (Derived from Soy Protein Isolates)

Dash Trials Corn Overtreatment Trial



1 Yield — 2 Varieties

✓ Work Totals Performance

<input type="checkbox"/> Varieties	Area Harvested	Yield	Total Yield	Moisture	Wet Weight	Total Wet Weight
<input type="checkbox"/> CP 5497 SEED+	44.9 ac	221 bu/ac	9,909 bu	13.4 %	12,358.1 lb/ac	554,904 lb
<input type="checkbox"/> CP 5497 DASH	47.3 ac	227 bu/ac	10,726 bu	13.1 %	12,693.8 lb/ac	600,665 lb

\$27/unit for Dash PBC: \$10.80/acre @32,000K: ROI @ \$3.50/bu= +\$10.20/acre

Warden CXII-
what is in it?

Ascend
ST3

Saltro

Seed +
Graphite

Preside
Ultra

Victrato



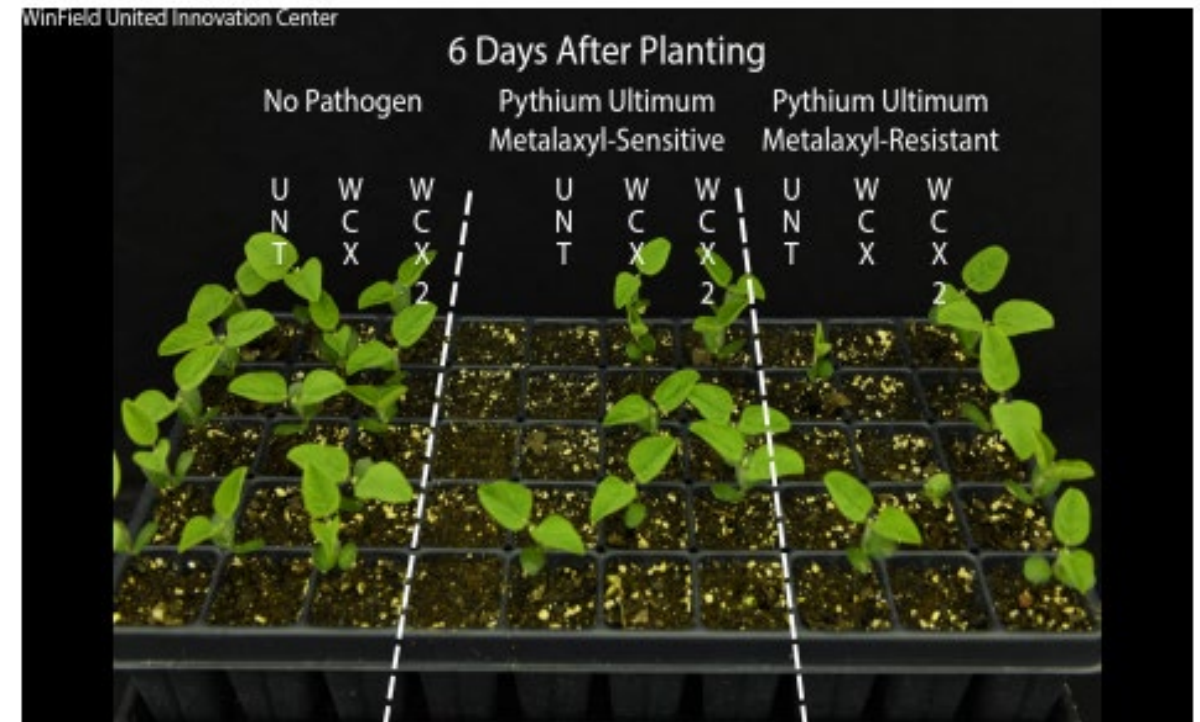
Soybean Seed Treatment



Warden CX II



- Vayantis® (Picarbutrazox), a new novel A.I.
- Mefanoxam for control of Pythium and Phytophthora (including metalaxyl-resistant Pythium)
- Sedaxane (Vibrance®) for Rhizoctonia protection, and
- Fludioxonil for protection from Fusarium



Preside Ultra

PRESIDE **ULTRA**[®]

A **VERDESIAN** NUE SOLUTION™

Uses take off technology to
improve nitrogen fixation in soybeans

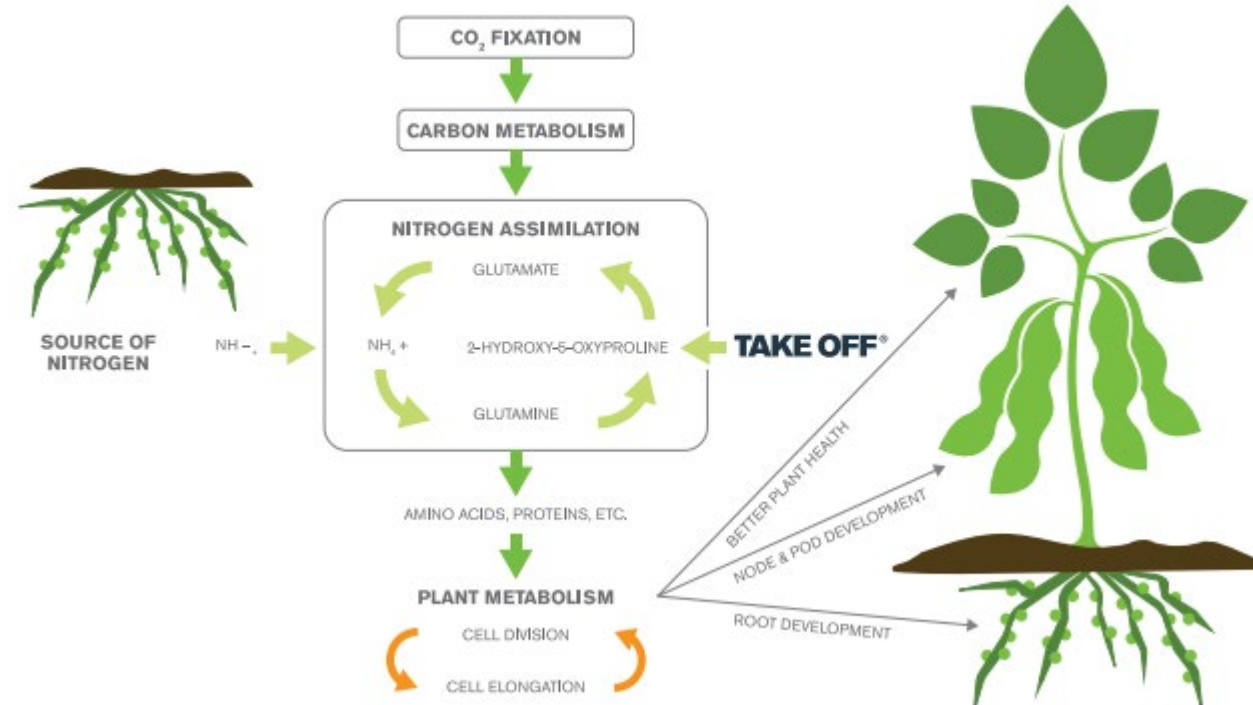
Accelerates nutrient acquisition and
utilization in the plant



TAKE OFF TECHNOLOGY

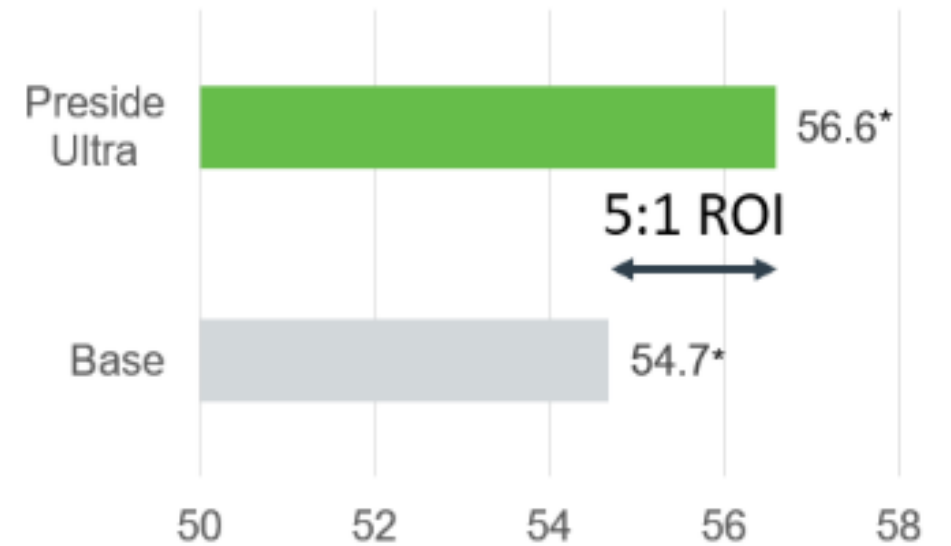
PRESIDE **ULTRA**[®]

A **VERDESIAN** NUE SOLUTION[™]





Preside Ultra Responsive Sites



- * Means are significantly different (**LSD 0.05**)
- 1.9 bu Advantage, 38 Trial Locations, 58% wins





Warden® CX II + Ascend® ST3™ vs. Warden® CX II (Answer Plot® 2024)



Auxin-dominant Plant Growth Regulator for early-season growth and root initiation

Mitigates early-season stress



Superior SDS Protection

More power to protect against the cause of Sudden Death Syndrome (*Fusarium virguliforme*)



No early-season plant stress

Protection from SDS without signs of plant stress, including phytotoxicity, stunting, and susceptibility to pests, weather or herbicide programs



Above and below ground vigor

Stronger plant stand and larger root mass for healthier soybean plants above and below ground



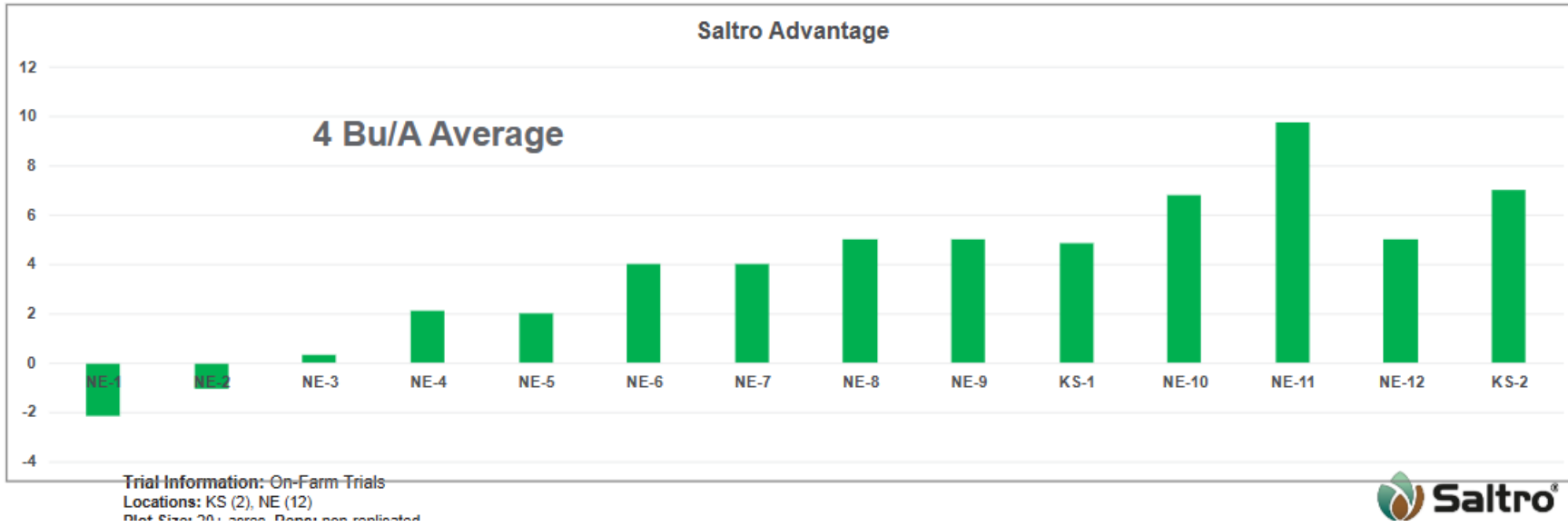
Higher potential yield

+4 bushels per acre (bu/A) yield improvement over ILEVO® seed treatment, under SDS pressure¹

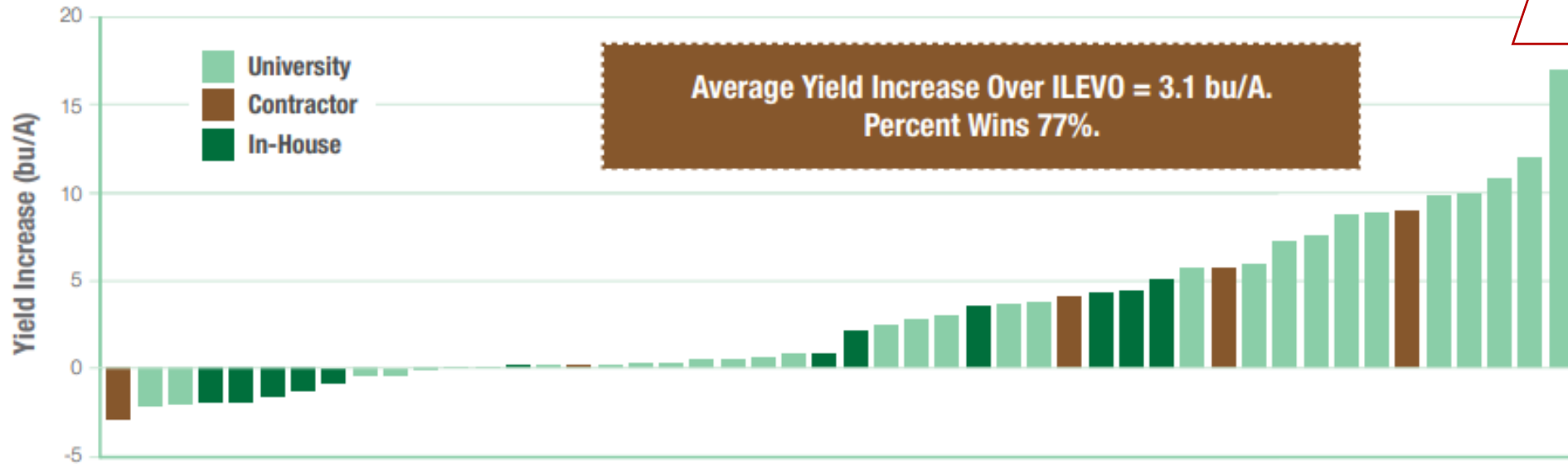


SALTRO SEED TREATMENT HELPS INCREASE YIELD POTENTIAL IN SOYBEAN

DATA FROM 13 LARGE BLOCK TRIALS IN 2024



Upgraded SDS Protection For Max Potential ROI



- High antioxidant activity protects cells from damage from harsh environmental conditions like cold, heat, drought, excess moisture, and UV radiation
- Provides essential nutrients for improved plant growth, development, and vigor
- Increased prominence of fine root hairs

GUARANTEED ANALYSIS

Calcium (Ca)	4.0%
Sulfur (S)	5.0%
5.0% Combined Sulfur	
Cobalt (Co)	0.070%
Copper (Cu)	0.090%
0.090% Water Soluble Copper (Cu)	

Iron (Fe)	1.0%
1.0% Water Soluble Iron (Fe)	
Manganese (Mn)	0.70%
0.70% Water Soluble (Mn)	
Molybdenum (Mo)	0.080%
Zinc (Zn)	2.0%
2.0% Water Soluble Zinc (Zn)	

Derived from Calcium Sulfate, Cobalt Sulfate, Copper Sulfate, Ferrous Sulfate, Manganese Sulfate, Sodium Molybdate, and Zinc Sulfate.

<p>1 Talc + Graphite for efficiency at planting</p> <p>Improves flowability and reduces bridging Dries seed and reduces static electricity</p>	<p>2 Micronutrients to support seedling emergence and a robust start</p> <p>Improves emergence and seeding vigor Supports season-long plant development</p>	<p>3 Biostimulants and Metabolites to setup crops for season-long success</p> <p>Mitigates abiotic stressors Fosters photosynthetic activity and carbohydrate production</p>
---	--	---

Seed + Graphite



Introducing: Victrato Seed Treatment



CLASSIFICATION: PUBLIC

All photos are either the property of Syngenta or are used with permission.

© 2025 Syngenta. Important: Always read and follow label instructions. Some products may not be registered for sale or use in all states or countries. Please check with your local extension service to ensure registration status.

TYMIRIUM®, Victrato®, the Alliance Frame, the Purpose Icon and the Syngenta logo are trademarks of a Syngenta Group Company. All other trademarks are the property of their respective third-party owners.

Corn Traits



- VT2 Pro-Yieldgard VT Pro
- TRECEPTA-VT2 + Agrisure Viptera trait for corn earworm
- VT4 Pro-Yieldgard rootworm, Agrisure Viptera, RNAi protein
- Smart Stax-yieldgard rootworm, herculex rootworm
- Smart Stax Pro-yieldgard rootworm, herculex rootworm, and RNAi protein
- PCE-Powercore Enlist-VT pro, herculex 1, glufosinate, enlist, and fop tolerant
- PCUE-Powercore Ultra Enlist-VT Pro, Herculex, glufosinate, enlist, fop tolerant, with Viptera trait

Vyconic Soybeans

Vyconic is the new herbicide trait platform
from Bayer

Glyphosate, Dicamba, Glufosinate, Mesotrione,
2,4-D tolerant soybeans

Expected to be released in 2027



Spring Herbicides

Chemical Plot in Seneca



Started 6 years ago

- Has had manure hauled and let go to seed
- Very heavy water hemp and palmer amaranth pressure

Work to continually test new herbicides to see what works well



Pre and Post Syngenta Corn Herbicide

Contains mesotrione(27),
S-metolachlor(15), Pyroxasulfone(15), bicyclopyrone(27)

Can be sprayed up to V8 stage

Could be looked at a one-pass option using the high rate

Or split-shot Pre & Post application

Recommended to add 0.5-1qt of Atrazine



Plot 8

Pre

Storen 1.2 qt

Atrazine 1 qt



Storen Control Picture



Plot 2

Pre

Storen 2.4 qt
Atrazine 1.5 qt



Storen Control Picture
one pass program



Tendovo



Tendovo[®]

- Soybean Pre option from Syngenta
- Contains s-metolachlor(15), Metribuzin(5), Chloransulam methyl(2)
- Excellent Crop Safety, great length of residual



Plot 24

Pre

Tendovo

1.75 qt



Tendovo Control Picture



Convintro



- Will be a new MOA Group 12 containing Diflufenican from Bayer
- Currently awaiting EPA approval
- Results look promising on the pigweed population
- Potential phyto concerns on corn and soybeans
- Will need another residual to go with this Pre
 - **Use for control of pigweed species only**

Fierce EZ 6 oz

Convintro 4.1 oz



Convintro Control Picture



Striax Herbicide

- Going to be the new post emergence Xtendimax (over the top Dicamba)
- Still waiting on EPA approval
- Hope to be able to use this next spring
- There will be some label changes



Liberty options & Best spray practices



- ❑ Can run Liberty ultra or Total but spraying practice for both is the same.
 - Make sure to run right rate 40oz Total or 29oz Liberty Ultra
 - Run plenty of AMS we recommended 32oz Class act NG & 2qt liquid AMS
 - Crop oil 6oz Superb
 - DRA very important around brome waterways
 - Spray during the day
 - Get coverage 20gal/ac



Importance of residual in Dicamba products



Left Picture 32oz Enlist

Right picture 12oz
Sterling blue





- Duracor-18-20 oz/ac
- Minimum of 200 lb product/ac as carrier
- Convenient: a time-saver, one less trip, one less application cost.
- Helps ensure both fertilizing and weed control. Get done - and done right - in one pass.

Ulti Graze
"ONE PASS, BETTER GRASS"



Wheat Fungicide Timing

- Green up in the spring
- Flag leaf
- Miravis Ace
- RustEase

Micros to Add to Fungicide

- Take Off LS
- Max In ZMB Plus

Killing Cover Crop In The Spring



- Proper Rates
- Proper Adjuvants
- Proper Timing
- Allelopathy in Corn following Rye

See & Spray Technology



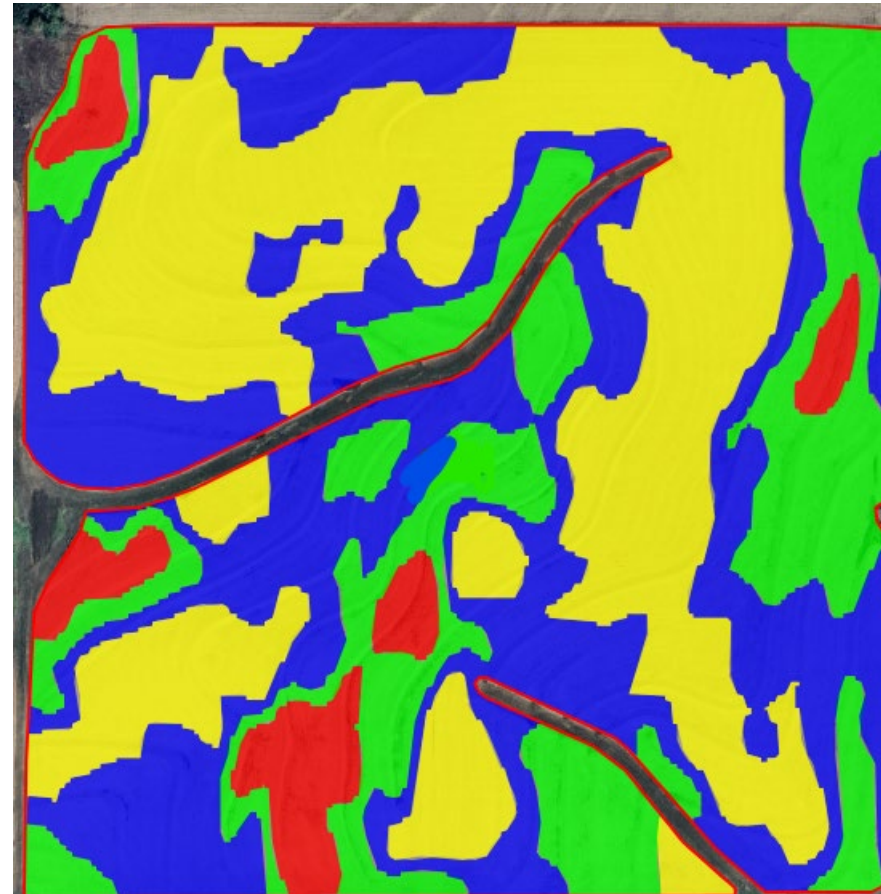
- Dual tank
(residual/burndown)
- Cost Savings
- Efficacy
- Less chemical usage



VRT Planting Prescriptions



- Cost Savings on Seed
- Increasing Yield
- Make maps for you



Solix Robotic Spray Trial 2025



- Proper field placement
- Refill station
- Efficiency

Thank you

